



PENINSULA

GRAMMAR

INSPIRING PERFORMANCE



PROSPECTUS





PRINCIPAL'S MESSAGE

I am truly honoured and excited to serve as the next Principal of Peninsula Grammar School, a remarkable coeducational school with a rich legacy that we cherish and respect. As we look to the future, my commitment is to build upon this strong foundation while embracing the evolving needs of our students.

At Peninsula Grammar, we cultivate a strong, supportive, and respectful community. Our inclusive and progressive environment nurtures not only academic excellence but also the personal growth and wellbeing of each student. Here, every child is known, supported, and inspired to reach their full potential in both academic and co-curricular pursuits.

We strive to be the school of choice on the Peninsula, dedicated to preparing our students for the challenges of life beyond the classroom. By fostering resilience, creativity, and critical thinking, we equip our learners with the skills they need to thrive in an ever-changing world. Our amazing facilities and grounds spanning over 80 acres make our school a beautiful place to learn.

Together, let us honour our past, uphold our school values, and passionately shape a future filled with opportunity and achievement for every student at Peninsula Grammar. I look forward to embarking on this exciting journey with you.

Mrs. Leandra Turner
Principal



VISION

Our vision is to be Australia's premier coeducational day and boarding school; known globally for our quality teaching, inspired standards and the pursuit of excellence for each student.

MISSION

Our mission is to deliver the highest-quality education to students from Kindergarten to Year 12. At Peninsula Grammar, our teachers are exceptional in the way they teach, nurture, and inspire each child in every classroom to reach for personal excellence.

Our community spirit and steadfast commitment to positive education continue to foster self-belief and creativity in each child, whilst our coeducational environment reflects the real world, producing active and informed global citizens.

Shaped by the Christian faith, our school strives to instil a social consciousness in each student so that they can succeed in every sphere of life as they continue to better the world around them.



PHILOSOPHY

“Quod Bonum Tenete” – Hold fast that which is good.

Our motto embodies the importance placed on both traditional and modern values at Peninsula Grammar. While we value a spiritual and moral way of life that prizes the highest standards of personal character with a Christian ethic and concern for others, we also proudly see ourselves at the forefront of contemporary education.

From our humble beginnings with only 86 students, we have grown into the premier coeducational school on the Mornington Peninsula. We are proud of our academic successes, our sporting triumphs and our unrivalled learning opportunities across a variety of subjects.

Today, Peninsula Grammar teaches over 1,350 students from Kindergarten to Year 12, with a world-class learning landscape that has only strengthened the uniqueness of our school, its students and our story.

We continue to celebrate our diversity, inclusivity and global mindedness, cultivating a culture of excellence across every endeavour.



PENINSULA GRAMMAR IS PROUDLY COEDUCATIONAL

We passionately believe that young men and women learning together helps them best challenge, question and critique the norms that govern society today. Learning from and with each other, our young people understand that diversity, equality, inclusion and acceptance are fundamental in navigating today's world.

We are cogent of our responsibility as a school to address bias and discrimination with education. Consequently, we are proud of the ways in which we empower students to make a positive difference in our local community and beyond.

HISTORY

Our story begins in 1957, in a rapidly growing region of the Mornington Peninsula.

As hundreds of new families moved into the shire, a group of five residents realised that their children had no local, independent school to attend and decided to take matters into their own hands.

Over time, the need for a new school continued to grow as did the interest of many prospective families on the Peninsula. And so it was in 1961, that the dreams of the founders was realised and work commenced on the creation of Melbourne's first independent school in more than 50 years.

As the builders moved out of the newly constructed single block of classrooms, the school's first Headmaster, Rev. Dudley Clarke, opened the school's doors to both teachers and 86 students from Prep to Year 8 the very next day.

60 years later, the school continues to pioneer new ways of learning on the Peninsula with over 1,350 bright students from Kindergarten to Year 12 enrolled as of this year.

FACILITIES

Privileged to be located in one of the most sought-after corners of the country, the school extends across Mount Eliza with stunning views of Port Philip Bay. It is renowned for its evolving landscape and the considerations it makes when building new learning environments.

Its most recent building, ALATUS, is designed to combine technology with critical thinking in a purpose-built environment that challenges students to rethink their learning and discern fact from fiction.

With a state-of-the-art science centre, three gymnasiums, two outdoor heated swimming pools, four ovals and grass tennis courts – the school truly sets the benchmark for natural beauty and exceptional learning environments.







CURRICULUM

A Kindergarten to Year 12 school, our curriculum provides a depth and breadth of education conducive to exceptional higher-learning outcomes. While we are continually pleased to offer a multitude of subjects, it is the work done to enhance the learning and growth of every child within these subjects that matters most to us.

We are particularly proud of our bespoke ALATUS curriculum, evolutionary in nature and driven by student interest. It is a

powerful example of transformative education, in its mission to imbue students with the confidence and skills to interrogate widely-held truths and seek answers to pressing questions.

Additionally, our VCE program offers 34 subjects to students and enables them to choose a pathway that best suits them. With exceptional and highly experienced leaders in the VCE program, we ensure every child knows success throughout their final years at the school.

KINDERGARTEN

Our dynamic and experienced educators inspire our students to learn more about themselves and their world through a developmental, play-based curriculum. No two days are ever the same.

We instil a love of learning and connection in all that we do, from Gumboot Walks to Clarke Centre Library visits and Junior Gym activities. Our students are continually challenged to develop their curiosity and creativity for authentic learning outcomes.

JUNIOR SCHOOL

A curriculum to promote curiosity, collaboration, creativity and a love for learning.

DISCOVERING ME – PREP TO YEAR 4

Our 'Discovering Me' program has a strong 21st-century curriculum focused on the growth of every individual to ensure each child experiences success on their learning journey. The Junior School curriculum is developed to promote curiosity, collaboration, creativity and a love of learning.

MIDDLE SCHOOL

A dedicated, modern curriculum that inspires curiosity in young students as they journey through adolescence.

BECOMING ME – YEAR 5 TO YEAR 8

Our unique Middle School program, 'Becoming Me' provides a supportive link between the Junior School and Pre Senior School (Year 9). Our program is tailored to support students during this formative time of physical, social and emotional growth.

PRE SENIOR SCHOOL

Meeting the unique needs of adolescent learners with a uniquely innovative program.

CHALLENGING ME – YEAR 9

Peninsula Grammar's Pre Senior program, 'Challenging Me' recognises the need to engage Year 9 students differently. In this critical year level, students make the transition from the Middle School to the Senior School program, where they develop life-long learning skills and a curiosity for self-discovery through relevant teachings and supportive relationships.

The program is centred around our Challenge Blocks, which see our students step outside both the traditional classroom and their personal comfort zone.

SENIOR SCHOOL

An exciting, challenging time in a student's life when one's character is finessed and skills are put to the test.

INSPIRING ME – YEAR 10 TO YEAR 12

Peninsula Grammar's 'Inspiring Me' program (Years 10 to 12) recognises the ever-changing world in which we live. We acknowledge the need for young people to continually adapt and thrive beyond their schooling.

This program is centred around problem-solving skills with the objective of inspiring our students to think actively, logically, socially and creatively, to best prepare them for opportunities as alumni.



CO-CURRICULAR PROGRAMS

We are renowned within the state of Victoria for the exceptional quality of our co-curricular programs.

SPORT

Our sporting traditions are as old as our school. Perhaps, that is why our students continue to excel in many sporting pursuits to this day. We are particularly proud of our women's football team, as well as our touch football and cricket teams that continue to achieve great sporting feats. Throughout the year our students have the opportunity to practice and compete in a number of sports, fostering both physical skill and sportsmanship.



MUSIC

Our Music Programs are widely acclaimed within creative circles. Led by some of Australia's most well-recognised musicians to create an unparalleled learning experience, where students have a place to nurture and hone their craft. Our students regularly feature in the VCE Top Class program and many of our alumni have gone on to succeed professionally in this field.



PERFORMING ARTS

The Performing Arts Program provides a purposeful balance between contemporary and traditional artistic teachings. Starting from Prep, creativity is encouraged, while the foundations for necessary skills and processes are nurtured. Our productions are considered some of the best on the Mornington Peninsula, with some of our students going on to study at the prestigious Victorian College of the Arts and pursue artistic professions in their own right.





WELLBEING AND POSITIVE EDUCATION

Our world-class Positive Education Program features prominently across our school. It involves ensuring that our young people are well-rounded, well-educated, considerate and community-minded. Our program has a strong focus on mental health and ensures that each student and their family has access to comprehensive pastoral care.

INTERNATIONAL STUDENTS

Now, more than ever before, our interconnectedness matters. We are inherently proud of our International Program and the connections we make with students who come to our school from across the globe. With students travelling from Asia and Europe to attend our school, we remain deeply committed to offering an exceptional learning opportunity to international students. We believe in the power of cross-cultural learning and in the connections that form between our students from all corners of the world.



BOARDING

Peninsula Grammar has two boarding houses located in distinct areas of the campus.

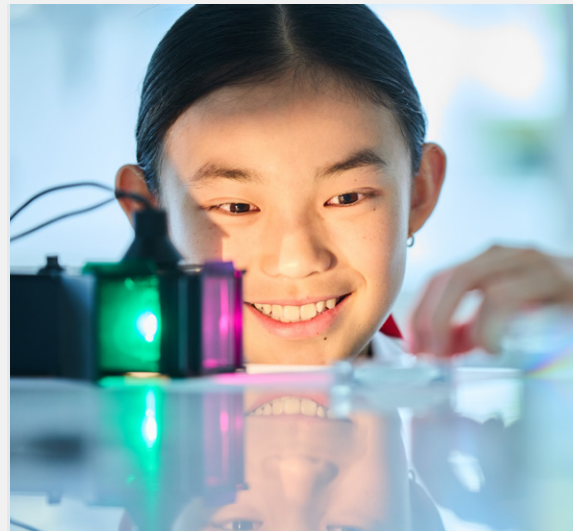
These buildings are part of our Boarding Program within which we work to provide both international and domestic students an unsurpassed learning experience and way of life. We look forward to the opportunity to reimagine our Boarding Program this year with our partner schools across China, Vietnam and Malaysia.

SCHOLARSHIPS

At Peninsula Grammar, we celebrate aspiration and achievement. Our Scholarship Program offers opportunities for exceptional students to reach their full potential. We have a diverse array of opportunities including academic and general excellence scholarships for Years 5, 7, and 9.

Visit our website or consult with our admissions team to learn more.







PENINSULA

— G R A M M A R —

INSPIRING PERFORMANCE