



PENINSULA

GRAMMAR

INSPIRING PERFORMANCE



PRINCIPAL'S STRATEGIC STATEMENT

2018 – 2022



PRINCIPAL'S STRATEGIC STATEMENT

DEAR PARENTS AND COMMUNITY MEMBERS

The Board of Peninsula Grammar is pleased to present the School's Strategic Statement for 2018-2022.

Informed by the unique cultural context of our school, the Statement is an outline of our focus for the next four years. At the heart of our strategic priorities lies the fundamental belief in the right of every child to pursue personal excellence and our responsibility to create the optimal conditions that enable them to achieve this.

Our Strategic Statement aims to share with our broader community the direction our school has chosen and to inform them of our unwavering commitment to; quality teaching, personalised learning and an environment that provides an outstanding setting for growth and opportunities for all.

A guide for the future of the School, we are proud of the possibilities that exist within this document and the plans we have already put in place to ensure our students and teachers know success.

YOURS SINCERELY

Ron Zammit
*Chairman of Board
of Directors*



Stuart Johnston
Principal



2018 – 2022

MISSION

Peninsula Grammar strives to provide the highest quality teachers who nurture and inspire students to reach for personal excellence.

Key characteristics of the School are its community spirit, its steadfast commitment to quality teaching and positive education. We aim to foster self-belief and creativity in every child.

We believe our mission is best achieved in a coeducational environment, shaped by Christian faith that produces active and informed global citizens.

VISION

To be Australia's premier coeducational, day and boarding school; known globally for our quality teaching, inspired standards and the pursuit of excellence for each student.



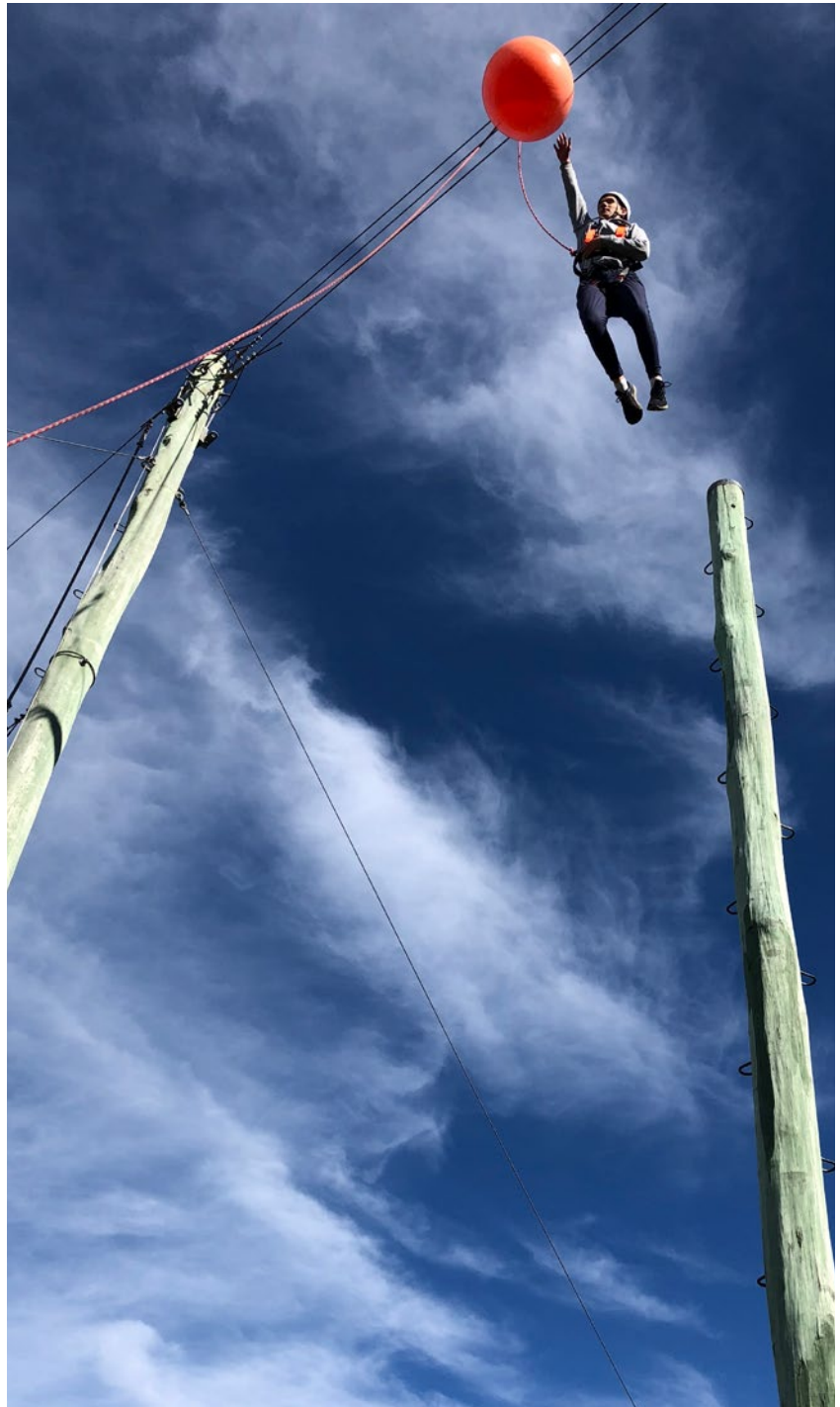


ONE

Affirm our unique identity and culture.

Peninsula Grammar is an inclusive, community minded school, where we value and respect every single person for who they are. We celebrate the uniqueness of our culture, cultivating it through the traditions, values and beliefs we prioritise above all others.

- Leaders embed themselves in and enact upon an agreed culture
- We welcome diversity and celebrate uniqueness
- Working and learning at Peninsula Grammar is a privilege
- We display artefacts and behaviours, which are linked to our beliefs and values
- Fostering interactions that help strengthen and spread the cultural message are our Core Values:
 - Christian Faith
 - Community Spirit
 - Personal Excellence
 - Co-Educational learning
 - Integrity
 - Stewardship



TWO

Provide a rigorous and engaging teaching and learning program that motivates boys and girls.

Education is an evolutionary pursuit; therefore, we continually refine, assess and design curriculum that does more than simply impart knowledge. Our curriculum challenges the status quo, presents new ideas, creates critical thinkers and propels curiosity beyond the classroom.

Our rigorous learning initiative places the focus beyond the what to the why and the how we teach our students to learn.

- High expectations – of staff and students
- Rigorous Learning Initiatives – advancing curriculum beyond the ordinary - Whole School Curriculum Mapping – planning for today and tomorrow
- Targeted Teaching - point of need instruction
- Aspiring Leaders – building tomorrows educational influencers.



THREE

Attract, develop and retain high quality staff.

Our school motto, Hold fast that which is good, bears testament to our responsibility to retain the highest quality, passionate and inspired teachers who instil in our students a desire for learning well beyond their time at our school. We pride ourselves on being a school that places teacher and student growth at the centre of all we do.

- Teacher Learning Coalition – designed by the staff of Peninsula Grammar, the coalition is charged with implementing a growth framework that drives the growth of every educator and student
- Teacher effectiveness – an information rich environment, the school uses data to inform adaptations to programs and opportunities to enhance learning outcomes
- We constantly seek to find the very best teachers possible, those who are worthy to stand in front of our students.



FOUR

Deliver a quality sports program.

Our school was built on a sporting culture that thrives to this day. We know that our students deserve every opportunity to flourish beyond the classroom and recognise the necessity of sport in maintaining a healthy balance in life.

- We are inclusive and engage every student, regardless of passion for, or interest in sport
- We aim to achieve our sporting potential through innovation, research and technology
- We continue to strengthen our sporting culture through the education of all staff and the invitation to others to understand the necessity of sport today
- Our commitment to the improvement of the resourcing of our sport program is unwavering, whether it be through coaching or facilities, we will drive the growth of all sports across the School.

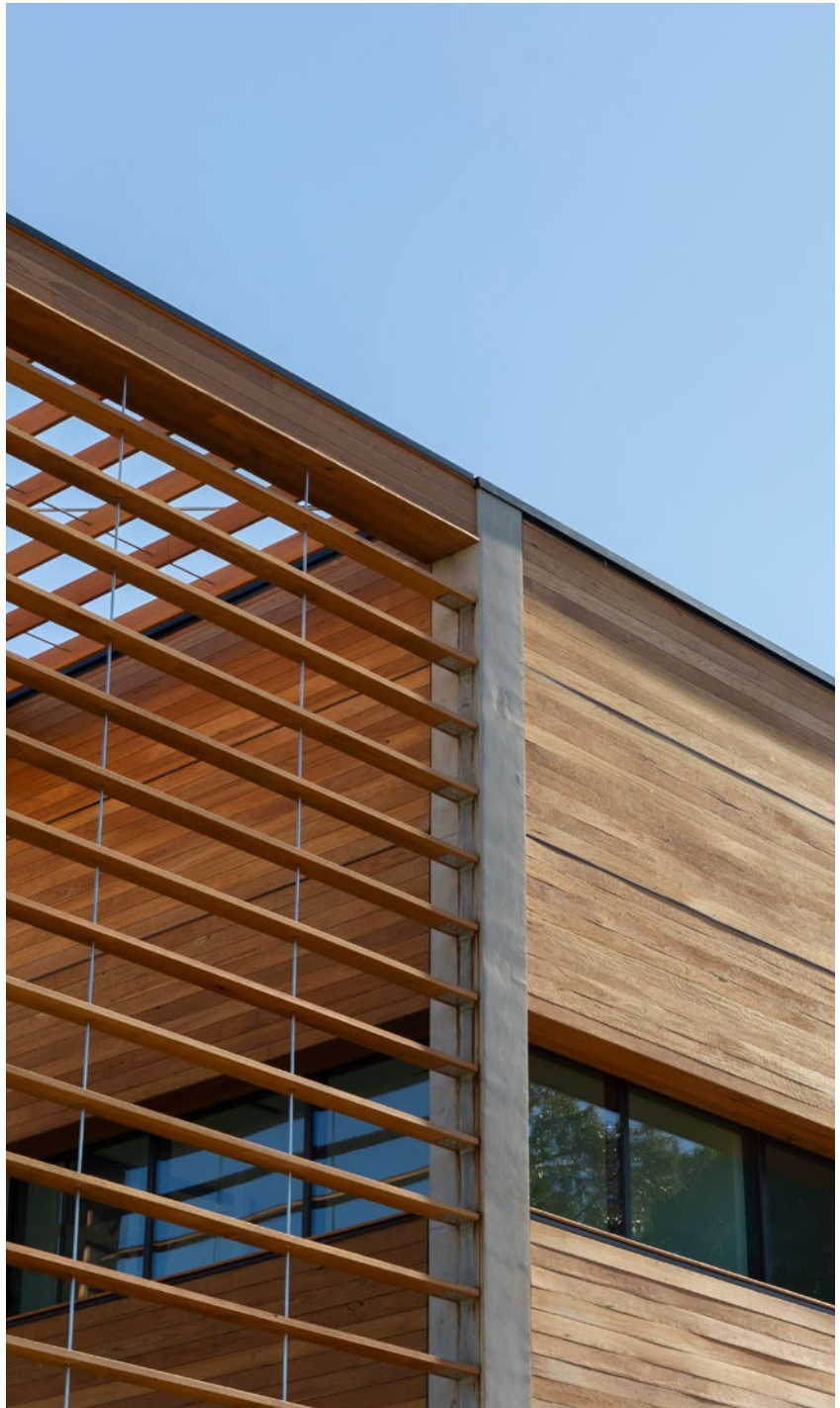


FIVE

Sustain and enhance our facilities.

We know that the learner of this century will require more than a classroom to advance their thinking and propel their learning. They require a landscape in which to immerse themselves, and an environment that grows with them. Our landscape, like our learners is ever changing.

- ALATUS – completed in 2021, the building is designed as a teaching tool in its own right, to propel student creativity, thinking and innovation beyond the literal.
- The Peninsula Grammar Centre is a future construction, planned to draw our community together to reflect upon our history and celebrate our culture. It will house our uniform shop, administration area and alumni archives
- Expansion of our facilities – the School will continually look for ways to prepare for the future and part of this planning is the acquisition of land for future sporting and learning pursuits.







PENINSULA
— G R A M M A R —
INSPIRING PERFORMANCE